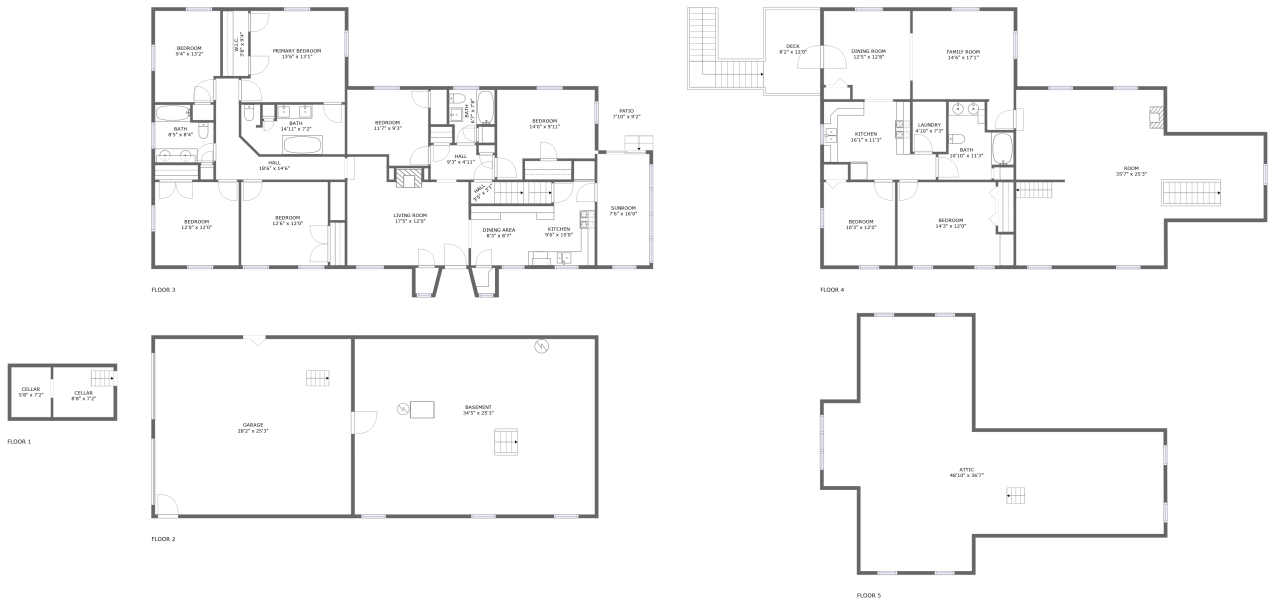


# 17337 York Road, Parkton, Maryland, United States



## Property summary

 **1** Garages

 **8** Bedrooms

 **4** Bathrooms

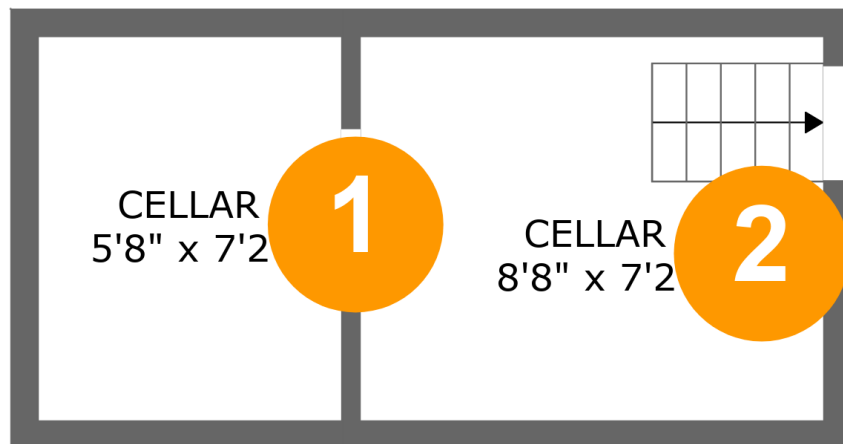
 **0** Half baths

 **5** Floors

 **3,225** Gross living area sqft

 **7,167** Total sqft

17337 York Road, Parkton, Maryland, United States



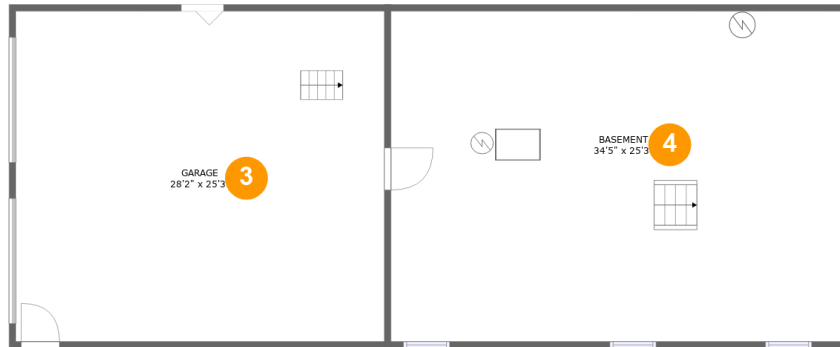
## Room dimensions

Floor 1

Total sqft: 129

Living area: 0

#		Dimensions	sqft	Counted as living area
1	Cellar	5'8" x 7'2"	41 sq. ft	No
2	Cellar	8'8" x 7'2"	62 sq. ft	No

**17337 York Road, Parkton, Maryland, United States**

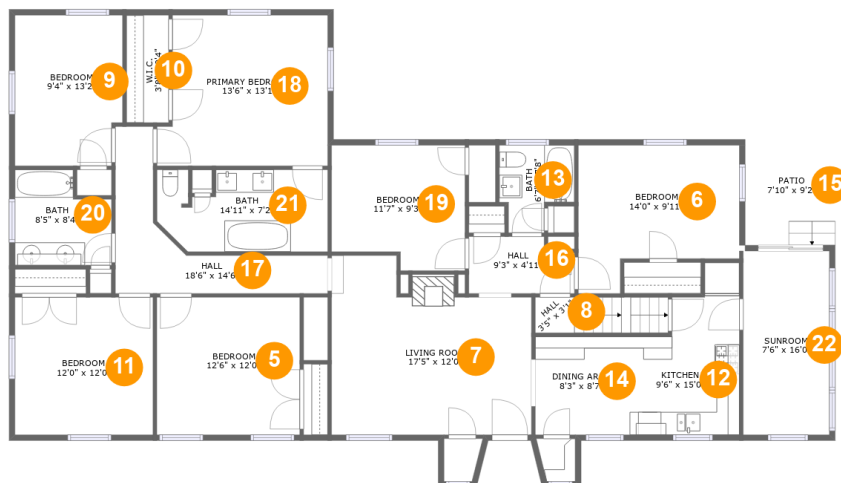
## Room dimensions

Floor 2

Total sqft: 1683

Living area: 0

#		Dimensions	sqft	Counted as living area
3	Garage	28'2" x 25'3"	711 sq. ft	No
4	Basement	34'5" x 25'3"	870 sq. ft	No

**17337 York Road, Parkton, Maryland, United States****Room dimensions**

Floor 3

Total sqft: 2240 Living area: 2168

#		Dimensions	sqft	Counted as living area
5	Bedroom	12'6" x 12'0"	149 sq. ft	Yes
6	Bedroom	14'0" x 9'11"	150 sq. ft	Yes
7	Living Room	17'5" x 12'0"	237 sq. ft	Yes
8	Hall	3'5" x 3'1"	36 sq. ft	Yes
9	Bedroom	9'4" x 13'2"	120 sq. ft	Yes
10	W.I.C.	3'8" x 9'4"	35 sq. ft	Yes
11	Bedroom	12'0" x 12'0"	144 sq. ft	Yes
12	Kitchen	9'6" x 15'0"	111 sq. ft	Yes
13	Bath	6'7" x 7'8"	41 sq. ft	Yes
14	Dining Area	8'3" x 8'7"	70 sq. ft	Yes
15	Patio	7'10" x 9'2"	72 sq. ft	No

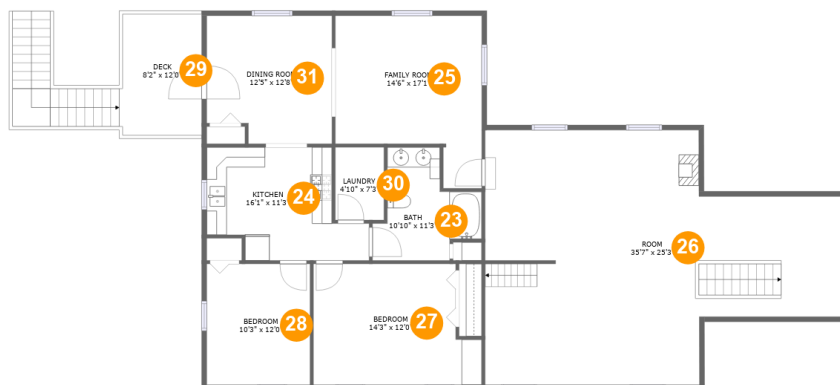
Scan captured on Mon, 27 Jan 2025 20:40:48 GMT

Information is calculated by Cubicasa technology deemed highly reliable but not guaranteed.

**17337 York Road, Parkton, Maryland, United States**

#		Dimensions	sqft	Counted as living area
16	Hall	9'3" x 4'11"	42 sq. ft	Yes
17	Hall	18'6" x 14'6"	102 sq. ft	Yes
18	Primary Bedroom	13'6" x 13'1"	182 sq. ft	Yes
19	Bedroom	11'7" x 9'3"	117 sq. ft	Yes
20	Bath	8'5" x 8'4"	62 sq. ft	Yes
21	Bath	14'11" x 7'2"	96 sq. ft	Yes
22	Sunroom	7'6" x 16'0"	120 sq. ft	Yes

17337 York Road, Parkton, Maryland, United States



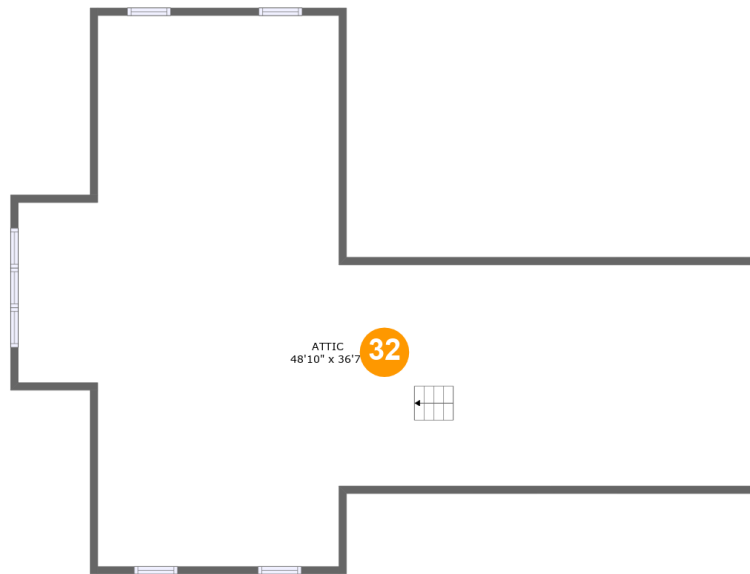
## Room dimensions

Floor 4

Total sqft: 1976 Living area: 1057

#		Dimensions	sqft	Counted as living area
23	Bath	10'10" x 11'3"	85 sq. ft	Yes
24	Kitchen	16'1" x 11'3"	143 sq. ft	Yes
25	Family Room	14'6" x 17'1"	201 sq. ft	Yes
26	Room	35'7" x 25'3"	657 sq. ft	No
27	Bedroom	14'3" x 12'0"	181 sq. ft	Yes
28	Bedroom	10'3" x 12'0"	123 sq. ft	Yes
29	Deck	8'2" x 12'0"	164 sq. ft	No
30	Laundry	4'10" x 7'3"	35 sq. ft	Yes
31	Dining Room	12'5" x 12'8"	149 sq. ft	Yes

17337 York Road, Parkton, Maryland, United States



## Room dimensions

Floor 5

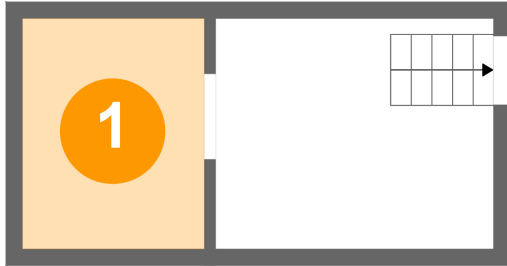
Total sqft: 1139

Living area: 0

#		Dimensions	sqft	Counted as living area
32	Attic	48'10" x 36'7"	876 sq. ft	No

# 17337 York Road, Parkton, Maryland, United States

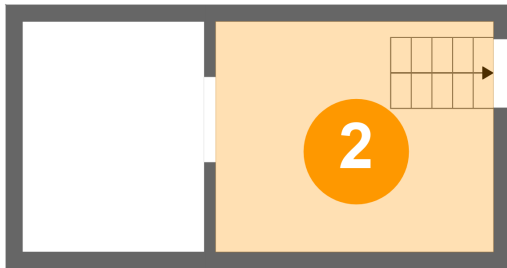
## 1 Floor 1 - Cellar



Dimensions: 5'8" x 7'2"  
Area: 41 sq. ft  
Counted as living area: No

Heated: No  
Finished: No  
Enclosed: Yes  
Contiguous: Yes  
Permitted: Yes  
Wet space: No  
Addition: No  
Conversion: No

## 2 Floor 1 - Cellar

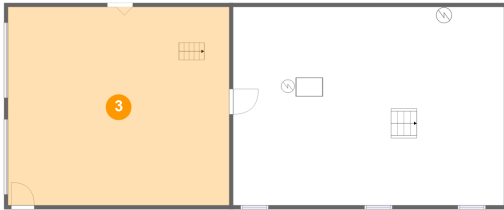


Dimensions: 8'8" x 7'2"  
Area: 62 sq. ft  
Counted as living area: No

Heated: No  
Finished: No  
Enclosed: Yes  
Contiguous: Yes  
Permitted: Yes  
Wet space: No  
Addition: No  
Conversion: No



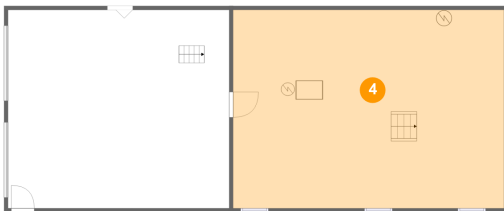
### 3 Floor 2 - Garage



Dimensions: 28'2" x 25'3"  
Area: 711 sq. ft  
Counted as living area: No

Heated: No  
Finished: No  
Enclosed: Yes  
Contiguous: Yes  
Permitted: Yes  
Wet space: No  
Addition: No  
Conversion: No

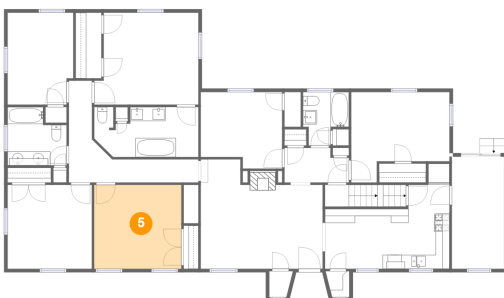
### 4 Floor 2 - Basement



Dimensions: 34'5" x 25'3"  
Area: 870 sq. ft  
Counted as living area: No

Heated: No  
Finished: No  
Enclosed: Yes  
Contiguous: Yes  
Permitted: Yes  
Wet space: No  
Addition: No  
Conversion: No

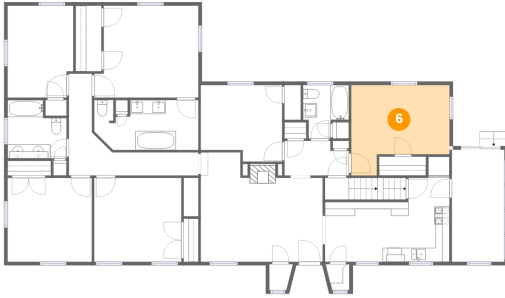
### 5 Floor 3 - Bedroom



Dimensions: 12'6" x 12'0"  
Area: 149 sq. ft  
Counted as living area: Yes

Heated: Yes  
Finished: Yes  
Enclosed: Yes  
Contiguous: Yes  
Permitted: Yes  
Wet space: No  
Addition: No  
Conversion: No

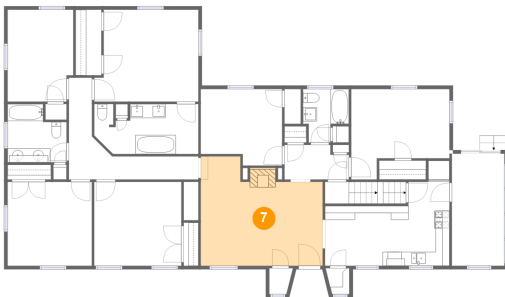
### 6 Floor 3 - Bedroom



Dimensions: 14'0" x 9'11"  
Area: 150 sq. ft  
Counted as living area: Yes

Heated: Yes  
Finished: Yes  
Enclosed: Yes  
Contiguous: Yes  
Permitted: Yes  
Wet space: No  
Addition: No  
Conversion: No

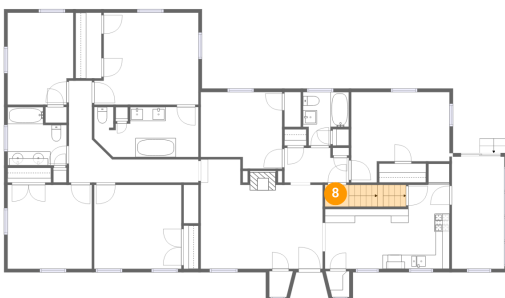
### 7 Floor 3 - Living Room



Dimensions: 17'5" x 12'0"  
Area: 237 sq. ft  
Counted as living area: Yes

Heated: Yes  
Finished: Yes  
Enclosed: Yes  
Contiguous: Yes  
Permitted: Yes  
Wet space: No  
Addition: No  
Conversion: No

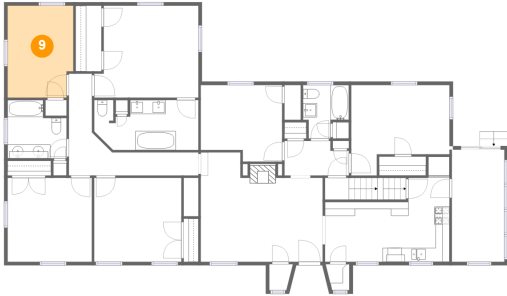
### 8 Floor 3 - Hall



Dimensions: 3'5" x 3'1"  
Area: 36 sq. ft  
Counted as living area: Yes

Heated: Yes  
Finished: Yes  
Enclosed: Yes  
Contiguous: Yes  
Permitted: Yes  
Wet space: No  
Addition: No  
Conversion: No

**9** Floor 3 - Bedroom



Dimensions: 9'4" x 13'2"  
Area: 120 sq. ft  
Counted as living area: Yes

Heated: Yes  
Finished: Yes  
Enclosed: Yes  
Contiguous: Yes  
Permitted: Yes  
Wet space: No  
Addition: No  
Conversion: No

**10** Floor 3 - W.I.C.



Dimensions: 3'8" x 9'4"  
Area: 35 sq. ft  
Counted as living area: Yes

Heated: Yes  
Finished: Yes  
Enclosed: Yes  
Contiguous: Yes  
Permitted: Yes  
Wet space: No  
Addition: No  
Conversion: No

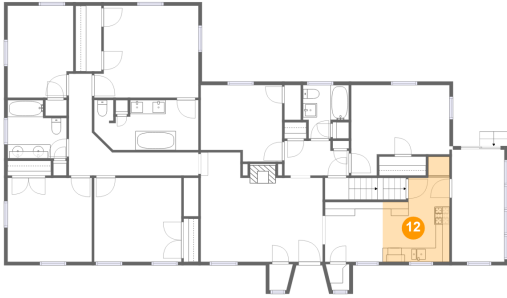
**11** Floor 3 - Bedroom



Dimensions: 12'0" x 12'0"  
Area: 144 sq. ft  
Counted as living area: Yes

Heated: Yes  
Finished: Yes  
Enclosed: Yes  
Contiguous: Yes  
Permitted: Yes  
Wet space: No  
Addition: No  
Conversion: No

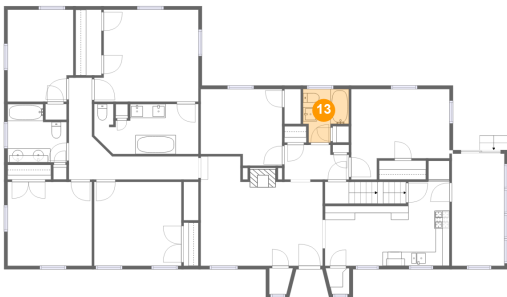
**12** Floor 3 - Kitchen



Dimensions: 9'6" x 15'0"  
Area: 111 sq. ft  
Counted as living area: Yes

Heated: Yes  
Finished: Yes  
Enclosed: Yes  
Contiguous: Yes  
Permitted: Yes  
Wet space: No  
Addition: No  
Conversion: No

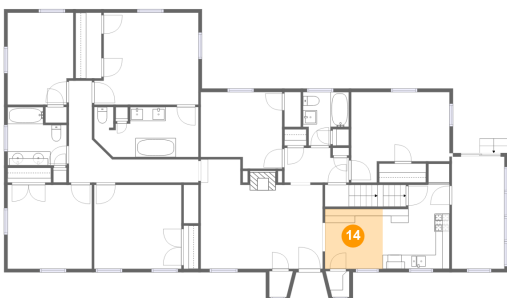
**13** Floor 3 - Bath



Dimensions: 6'7" x 7'8"  
Area: 41 sq. ft  
Counted as living area: Yes

Heated: Yes  
Finished: Yes  
Enclosed: Yes  
Contiguous: Yes  
Permitted: Yes  
Wet space: Yes  
Addition: No  
Conversion: No

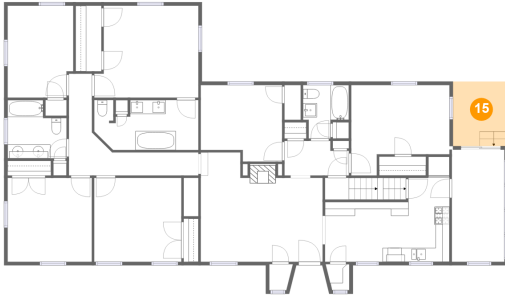
**14** Floor 3 - Dining Area



Dimensions: 8'3" x 8'7"  
Area: 70 sq. ft  
Counted as living area: Yes

Heated: Yes  
Finished: Yes  
Enclosed: Yes  
Contiguous: Yes  
Permitted: Yes  
Wet space: No  
Addition: No  
Conversion: No

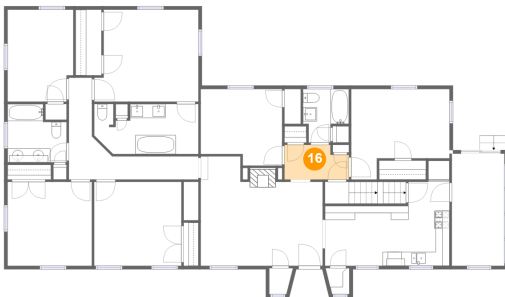
**15** Floor 3 - Patio



Dimensions: 7'10" x 9'2"  
Area: 72 sq. ft  
Counted as living area: No

Heated: No  
Finished: Yes  
Enclosed: No  
Contiguous: Yes  
Permitted: Yes  
Wet space: No  
Addition: No  
Conversion: No

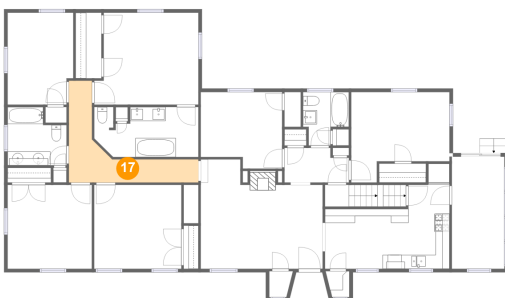
**16** Floor 3 - Hall



Dimensions: 9'3" x 4'11"  
Area: 42 sq. ft  
Counted as living area: Yes

Heated: Yes  
Finished: Yes  
Enclosed: Yes  
Contiguous: Yes  
Permitted: Yes  
Wet space: No  
Addition: No  
Conversion: No

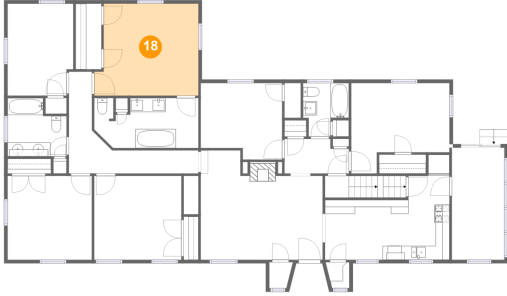
**17** Floor 3 - Hall



Dimensions: 18'6" x 14'6"  
Area: 102 sq. ft  
Counted as living area: Yes

Heated: Yes  
Finished: Yes  
Enclosed: Yes  
Contiguous: Yes  
Permitted: Yes  
Wet space: No  
Addition: No  
Conversion: No

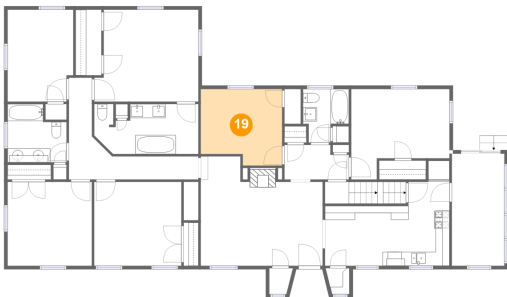
### 18 Floor 3 - Primary Bedroom



Dimensions: 13'6" x 13'1"  
Area: 182 sq. ft  
Counted as living area: Yes

Heated: Yes  
Finished: Yes  
Enclosed: Yes  
Contiguous: Yes  
Permitted: Yes  
Wet space: No  
Addition: No  
Conversion: No

### 19 Floor 3 - Bedroom



Dimensions: 11'7" x 9'3"  
Area: 117 sq. ft  
Counted as living area: Yes

Heated: Yes  
Finished: Yes  
Enclosed: Yes  
Contiguous: Yes  
Permitted: Yes  
Wet space: No  
Addition: No  
Conversion: No

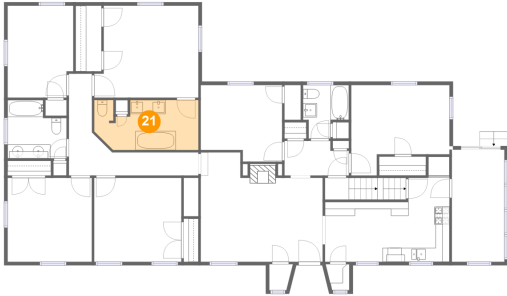
### 20 Floor 3 - Bath



Dimensions: 8'5" x 8'4"  
Area: 62 sq. ft  
Counted as living area: Yes

Heated: Yes  
Finished: Yes  
Enclosed: Yes  
Contiguous: Yes  
Permitted: Yes  
Wet space: Yes  
Addition: No  
Conversion: No

**21** Floor 3 - Bath



Dimensions: 14'11" x 7'2"  
Area: 96 sq. ft  
Counted as living area: Yes

Heated: Yes  
Finished: Yes  
Enclosed: Yes  
Contiguous: Yes  
Permitted: Yes  
Wet space: Yes  
Addition: No  
Conversion: No

**22** Floor 3 - Sunroom



Dimensions: 7'6" x 16'0"  
Area: 120 sq. ft  
Counted as living area: Yes

Heated: Yes  
Finished: Yes  
Enclosed: Yes  
Contiguous: Yes  
Permitted: Yes  
Wet space: No  
Addition: No  
Conversion: No

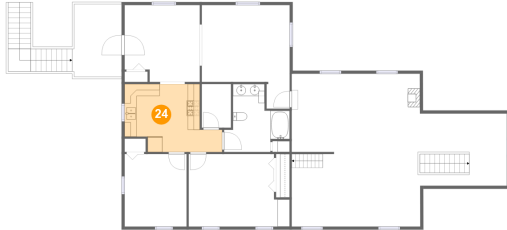
**23** Floor 4 - Bath



Dimensions: 10'10" x 11'3"  
Area: 85 sq. ft  
Counted as living area: Yes

Heated: Yes  
Finished: Yes  
Enclosed: Yes  
Contiguous: Yes  
Permitted: Yes  
Wet space: Yes  
Addition: No  
Conversion: No

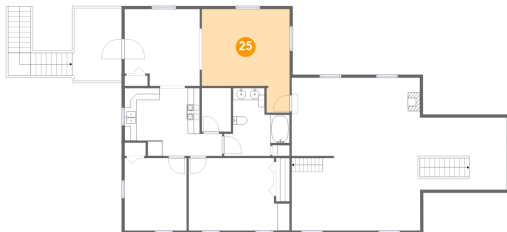
**24** Floor 4 - Kitchen



Dimensions: 16'1" x 11'3"  
Area: 143 sq. ft  
Counted as living area: Yes

Heated: Yes  
Finished: Yes  
Enclosed: Yes  
Contiguous: Yes  
Permitted: Yes  
Wet space: No  
Addition: No  
Conversion: No

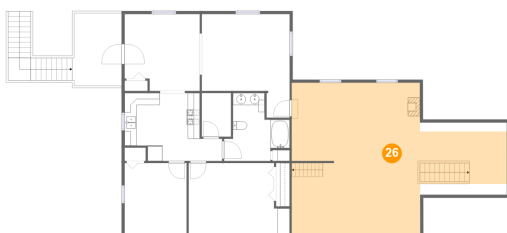
**25** Floor 4 - Family Room



Dimensions: 14'6" x 17'1"  
Area: 201 sq. ft  
Counted as living area: Yes

Heated: Yes  
Finished: Yes  
Enclosed: Yes  
Contiguous: Yes  
Permitted: Yes  
Wet space: No  
Addition: No  
Conversion: No

**26** Floor 4 - Room

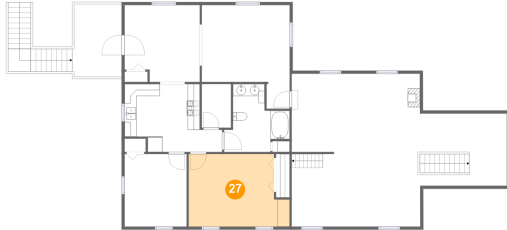


Dimensions: 35'7" x 25'3"  
Area: 657 sq. ft  
Counted as living area: No

Heated: Yes  
Finished: No  
Enclosed: Yes  
Contiguous: Yes  
Permitted: Yes  
Wet space: No  
Addition: No  
Conversion: No



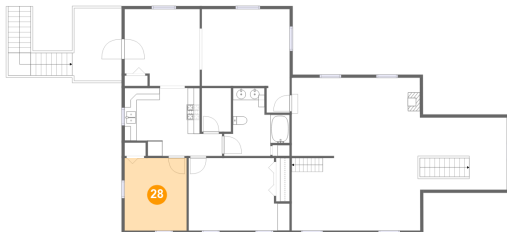
**27** Floor 4 - Bedroom



Dimensions: 14'3" x 12'0"  
Area: 181 sq. ft  
Counted as living area: Yes

Heated: Yes  
Finished: Yes  
Enclosed: Yes  
Contiguous: Yes  
Permitted: Yes  
Wet space: No  
Addition: No  
Conversion: No

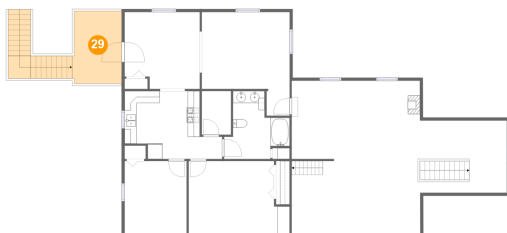
**28** Floor 4 - Bedroom



Dimensions: 10'3" x 12'0"  
Area: 123 sq. ft  
Counted as living area: Yes

Heated: Yes  
Finished: Yes  
Enclosed: Yes  
Contiguous: Yes  
Permitted: Yes  
Wet space: No  
Addition: No  
Conversion: No

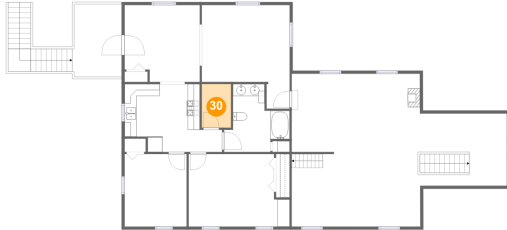
**29** Floor 4 - Deck



Dimensions: 8'2" x 12'0"  
Area: 164 sq. ft  
Counted as living area: No

Heated: No  
Finished: Yes  
Enclosed: No  
Contiguous: Yes  
Permitted: Yes  
Wet space: No  
Addition: No  
Conversion: No

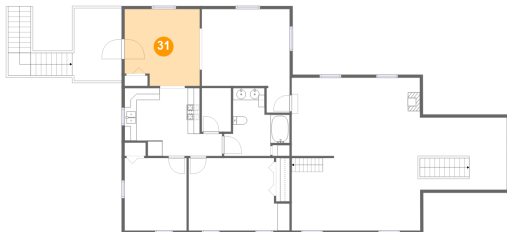
### 30 Floor 4 - Laundry



Dimensions: 4'10" x 7'3"  
Area: 35 sq. ft  
Counted as living area: Yes

Heated: Yes  
Finished: Yes  
Enclosed: Yes  
Contiguous: Yes  
Permitted: Yes  
Wet space: No  
Addition: No  
Conversion: No

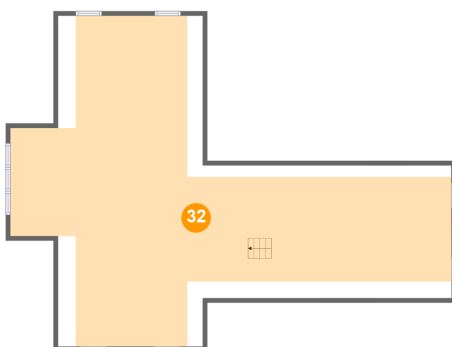
### 31 Floor 4 - Dining Room



Dimensions: 12'5" x 12'8"  
Area: 149 sq. ft  
Counted as living area: Yes

Heated: Yes  
Finished: Yes  
Enclosed: Yes  
Contiguous: Yes  
Permitted: Yes  
Wet space: No  
Addition: No  
Conversion: No

### 32 Floor 5 - Attic



Dimensions: 48'10" x 36'7"  
Area: 876 sq. ft  
Counted as living area: No

Heated: No  
Finished: No  
Enclosed: Yes  
Contiguous: Yes  
Permitted: Yes  
Wet space: No  
Addition: No  
Conversion: No